



**SOCIAL ENTERPRISE GOLD MARK**  
ACCREDITED FOR BUSINESS EXCELLENCE

# 'Making a Mark'

## Mark Holder Social Impact Declaration

### Bath Spa University

Bath Spa University (BSU) offers a wide range of courses across the arts, sciences, education, social science and business and employs outstanding creative professionals which support our aim to be a leading educational institution in creativity, culture and enterprise.



As a social enterprise we put people, communities and the environment at the heart of our work. Our purpose is to challenge our students and staff to realise their talent and thrive, for their own benefit and for the wider good. By doing this we will think and make the world better. This starts with our students and staff but extends to our local, regional and global community through our teaching and learning, research and partnerships.

The Social Enterprise Gold Mark criteria includes a requirement for all applicants and renewing Mark Holders to answer a set of social impact questions, which illustrate how they are striving to meet their social/environmental objectives. Below are examples of how **Bath Spa University** is Making a Mark, striving to create a positive impact on people and planet.

### Fostering economic and cultural development

We're proud of our partnerships with employers, cultural organisations, academics and alumni, in Bath and beyond. Together, we work to

Email: [admissions@bathspa.ac.uk](mailto:admissions@bathspa.ac.uk)  
Website: [www.bathspa.ac.uk/](http://www.bathspa.ac.uk/)  
Phone: +44 (0)1225 875875





provide support for our community, our students and staff, and our valuable research and creative practice.

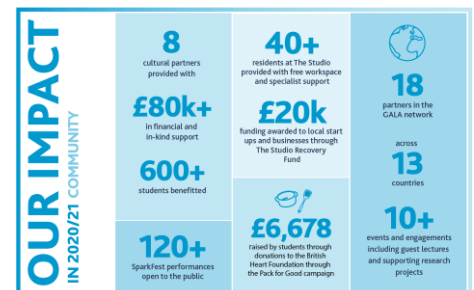
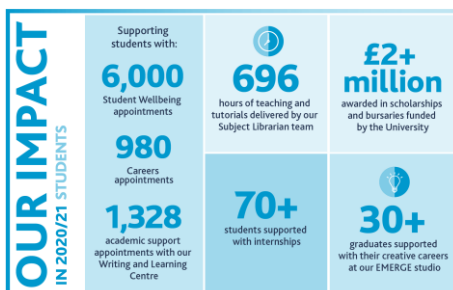
We have a profound commitment to creative enterprise to widen society's spectrum for solving social challenges and strive to make a tangible difference - be that graduate outcome; research innovation and knowledge exchange; public engagement and social inclusion; or regeneration, sustainability and recovery.

## Working towards global sustainability goals

In 2019, BSU became a signatory to the SDG Accord, under which we committed to aligning our activities to support progress towards the UN Sustainable Development Goals (SDGs), through our education, research and business activities. This includes:

- **SDG3 good health & wellbeing** – we provide comprehensive physical and mental health support for students and staff. We have partnered with Fairfield Health Centre to provide free health and wellbeing support for our students.
- **SDG4 quality education** – BSU leads and collaborates in education partnerships across the Globe, including partnerships with other education providers in the South West UK, such as Bath College and Weston College.
- **SDG10 reduced inequalities** – Bath Spa is a leader in widening participation in HE, which is a key measure in reducing inequality. We have developed a methodology for measuring the efficacy of widening participation measures, which is now widely used under the NERUPI partnership.

## Creating impact for stakeholders



Email: [admissions@bathspa.ac.uk](mailto:admissions@bathspa.ac.uk)  
 Website: [www.bathspa.ac.uk/](http://www.bathspa.ac.uk/)  
 Phone: +44 (0)1225 875875

